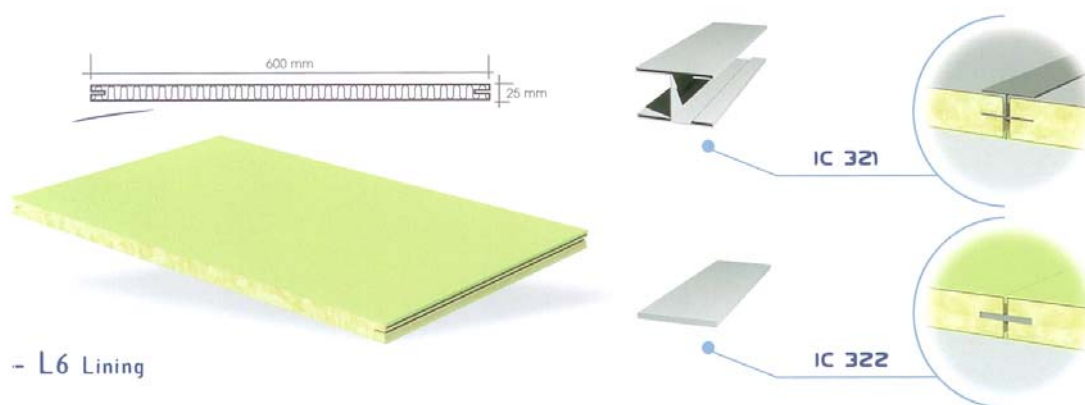


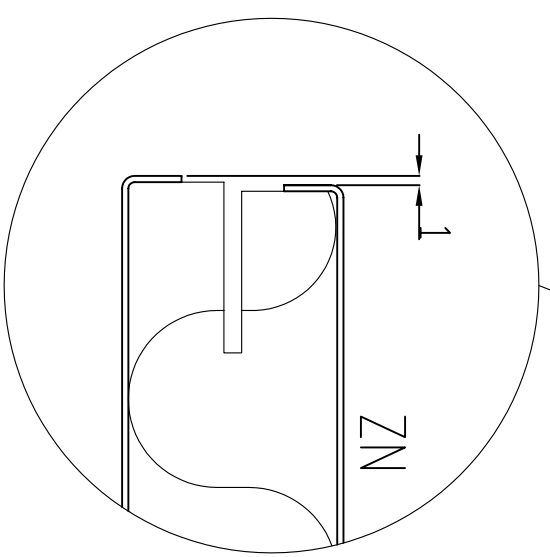
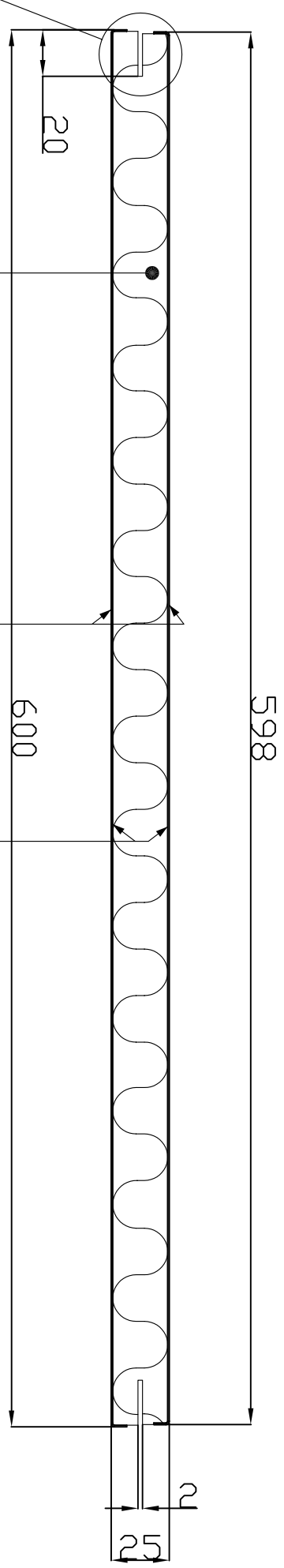
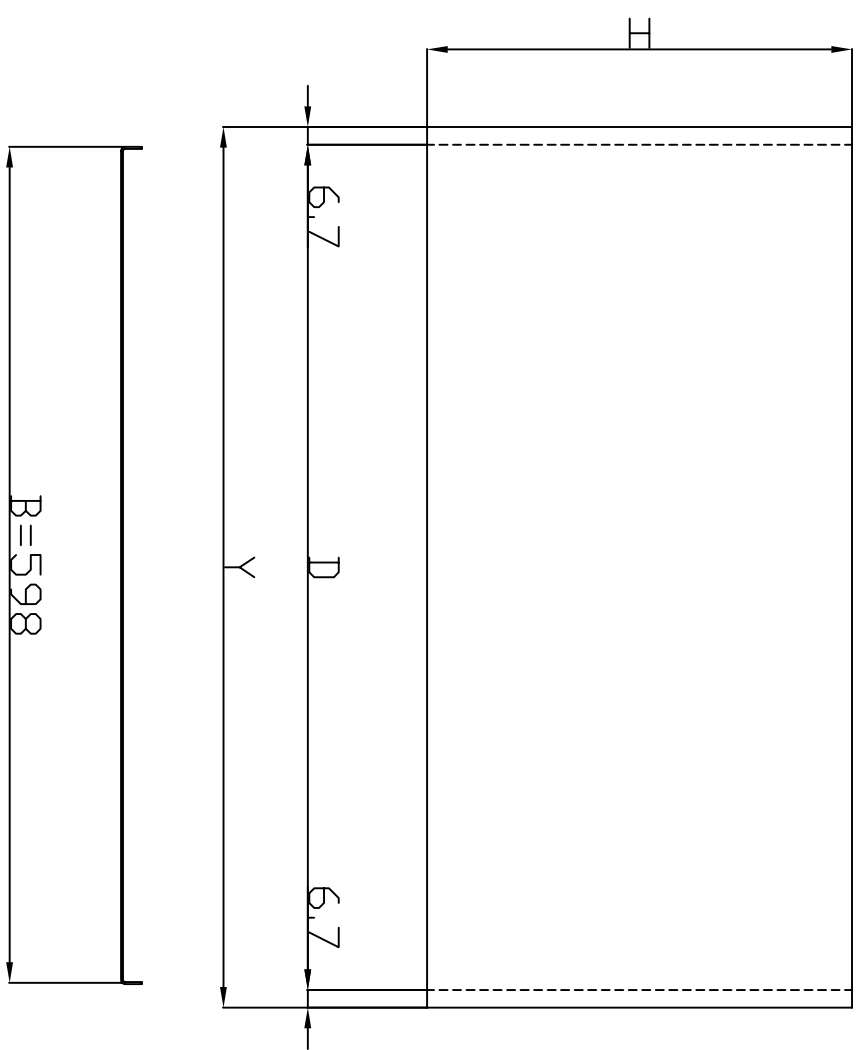
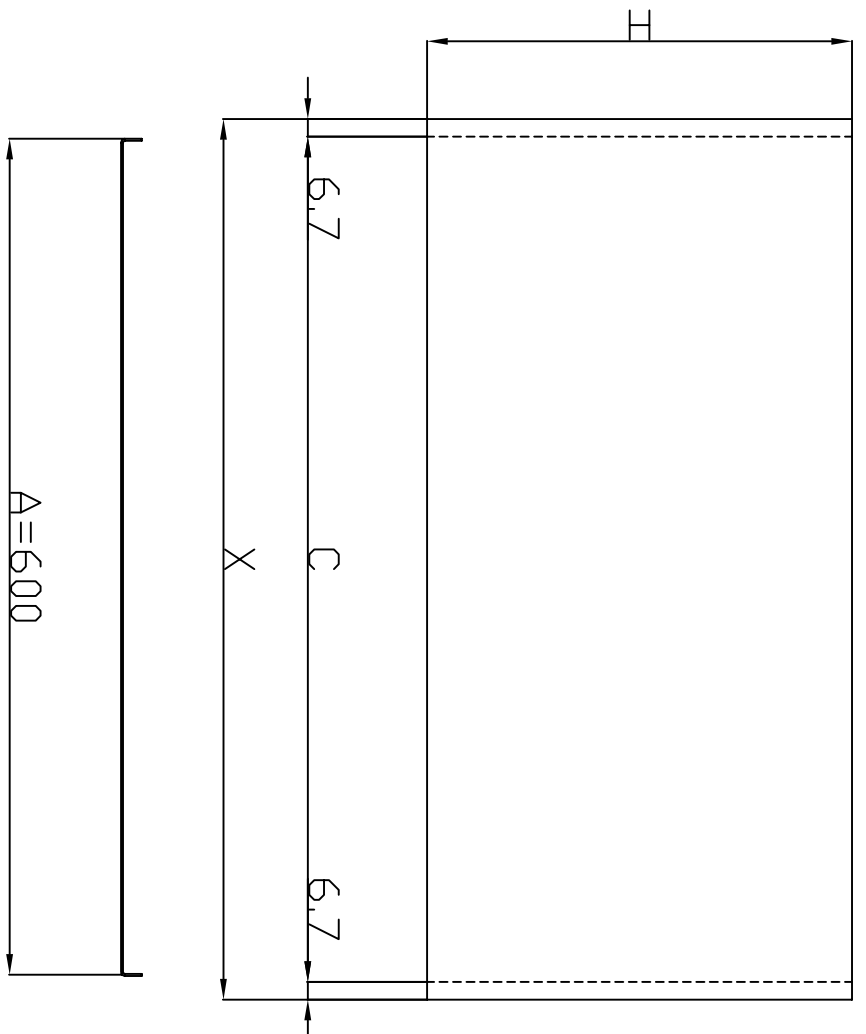
GENOA WALL PANEL SYSTEM



Product data sheet

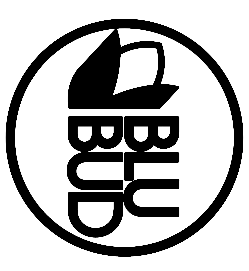
General Information	
description	lining panel with hidden joint
type	ItalCabin GS L6
manufacturer	Precetti S.p.A.
Application	
fire properties	B15 Class fire resistant
certificates, approvals	RINA MED Module B Nr. MED363810CS/003
Size	
width	600 mm (max 920 mm) + toll.
length	up to 2500 mm + toll.
thickness of panel	25 mm
Structure	
core	150 Kg/m ³ rockwool
skins	galvanized steel, stainless steel
thickness of skins	0,7mm
finishing	raw, paint, PVC
Accessories	
standard	bottom profiles, top profiles, joint profiles, wall profiles
Mechanical and phisical properties	
panel weight	abt. 14,5 kg/m ²
noise reduction	31,5 dB (RW)

B15_panel_GS_type_L6_rev00



③	POLYURETHANE GLUE
②	GALVANIZED STEEL COIL th. 07/10 H. 610 mm
①	ROCK WOOL PANEL 536X2200X22.8 mm
N.	DESCRIZIONE DEL DETTAGLIO / DESCRIPTION OF DETAILS
Riferimento	SANDWICH PANELS
Descrizione	LINING type GS - L 6

Material -		BLUBUD srl	
Spessore - 25 mm		Sede operativa: Via Dante 2/7 16121 Genova Italy Tel. +39-010.89.95.535/536 Fax. +39-010.89.95.537	
Note		Sede legale: Via Fieschi 20/9 16121 Genova Italy e-mail: info@blubud.it www: http://www.blubud.it	
Tolleranza generale		Classe prodotto B15	
General tolerance		Fire Rating	
Width 1 mm - Height 2 mm		N. disegno IC101	
Thickness 1 mm		Drawing	



Questo disegno non può essere usato o riprodotto senza nostra autorizzazione
This drawing cannot be copied, duplicated or disclosed without our permission