

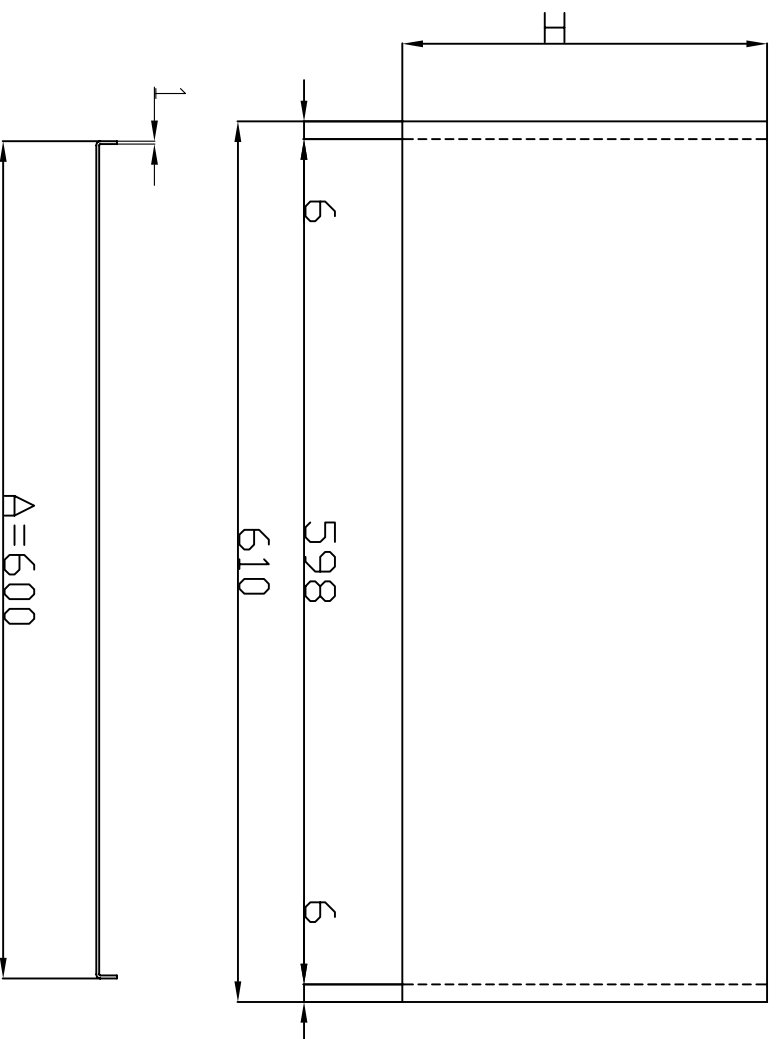
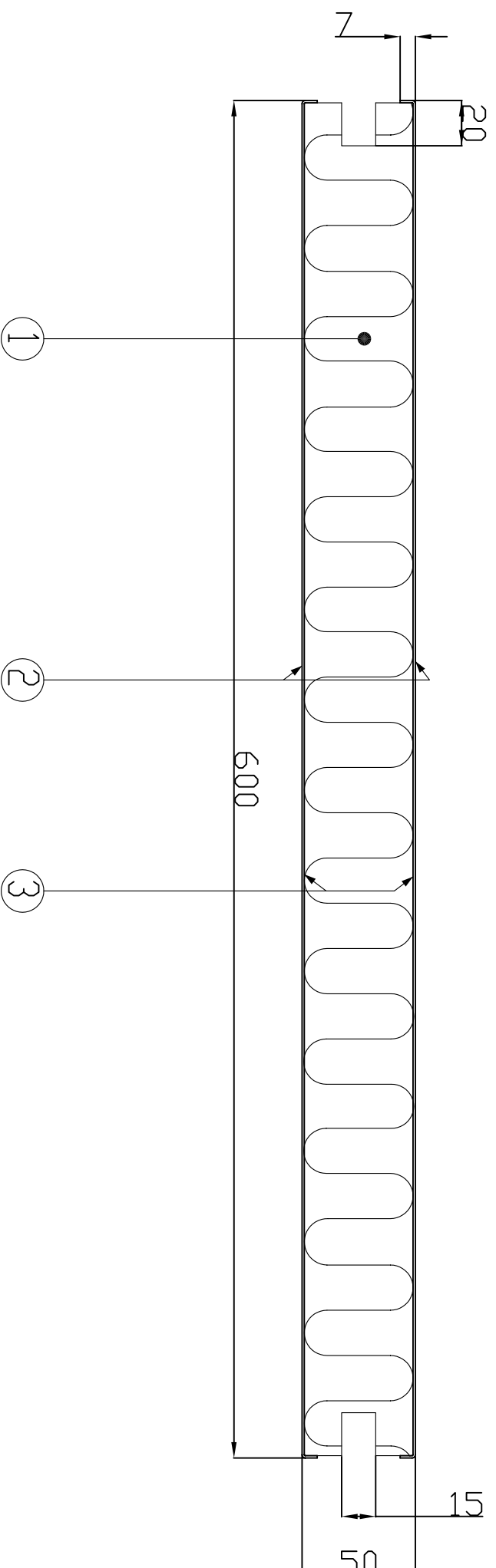
GENOA WALL PANEL SYSTEM ALUMINIUM



Product data sheet

General Information	
description	aluminium partition panel with hidden joint
type	ItalCabin GX S6
manufacturer	Precetti S.p.A.
Application	
fire properties	B15 Class fire resistant
certificates, approvals	RINA MED Module B Nr. MED344208CS/005
Size	
width	600 mm (max 920 mm) + toll.
length	up to 2500 mm + toll.
thickness of panel	50 mm
Structure	
core	150 Kg/m ³ rockwool
skins	aluminium
thickness of skins	1 mm
finishing	paint, PVC
Accessories	
standard	bottom profiles, top profiles, joint profiles, wall profiles
Mechanical and physical properties	
panel weight	abt. 13 kg/m ²
noise reduction	n.a.

B15_panel_GS_type_X6_rev00



③	POLYURETHANE GLUE
②	ALUMINIUM COIL th. 10/10 H. 610 mm
①	R0CK W0DL PANEL 536X2200X47. 8 mm
N.	DESCRIZIONE DEL DETTAGLIO / DESCRIPTION OF DETAILS
Riferimento	SANDWICH PANELS
Reference	

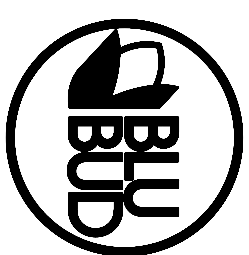
Descrizione
Description
ALUMINIUM type GX - S 6

Material -
Material -

Spessore - 50 mm
Thickness - 50 mm

Note
Notes
Peso netto Kg/m2
Net Weight Kg/m2
13.0

Tolleranza generale
General tolerance
Width 1 mm - Height 2 mm
Thickness 1 mm



BLUBUD srl
Sede operativa:
Via Dante 2/7
16121 Genova Italy
Tel. +39-010.89.95.536
Fax. +39-010.89.95.537
Sede legale:
Via Freschi 20/9
16121 Genova Italy
e-mail: info@blubud.it
www: http://www.blubud.it

Scale	1:2.5	Date	17/06/2011
Controllato da	Checked by	Disegnato da	Drawn by
Classe prodotto	B15		
N. disegno	IC129/1		