

PULLMAN BED



Product data sheet

General Information	
description	bedroom ceiling with hidden structure
type	N
Structural box	
length	2085 mm
width	1014 mm
height	255 mm
thickness steel	1,5 mm
distance from the ceiling	400 mm
Leaf	
material of skins	steel
coating	white or laminates
Accessories	
standard	hinges, lockcase
Mechanical and physical properties	
	n.a.

pullman_bed_type_N_rev00

6

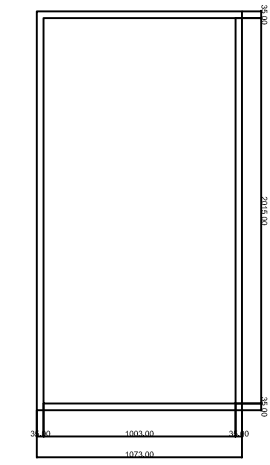
5

4

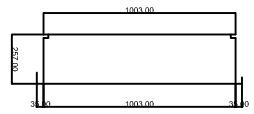
3

2

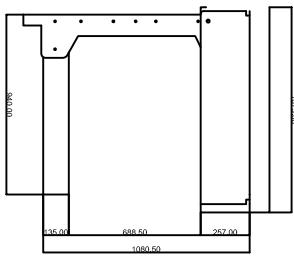
1



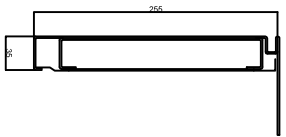
0000564.00
CLOSED BED - PERSPECTIVE VIEW
SCALA 1:15



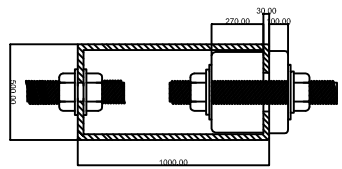
0000563.00
BED STRUCTURAL BOX - GENERAL VIEW
IRON TIN 15/10
SCALA 1:10



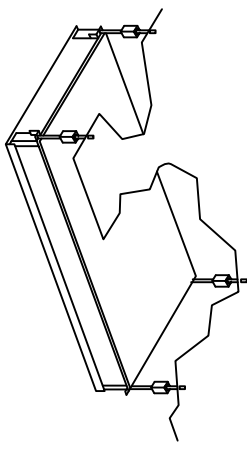
0000565.00
OPEN BED - SIDE VIEW
IRON and ALUMINIUM
SCALA 1:10



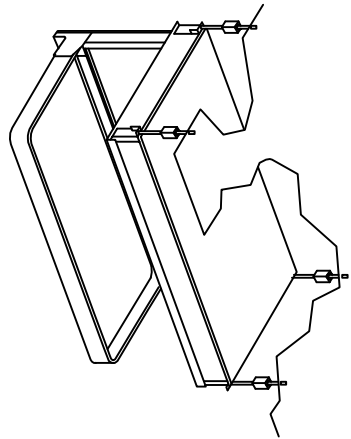
0000563.00
BED STRUCTURAL BOX - LONGIT. SECTION
IRON
SCALA 1:2



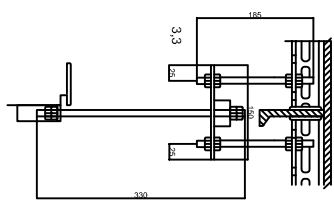
0000563.00
FIXING CEILING SHOCK ABSORBER DETAIL
IRON and RUBBER
SCALA 1:1



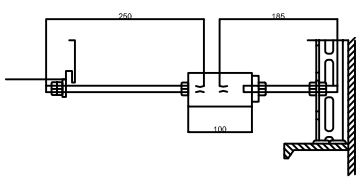
0000564.00
CLOSED BED - PERSPECTIVE VIEW
SCALA 1:15



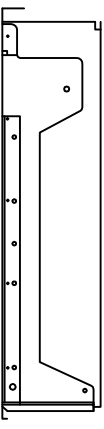
0000565.00
OPEN BED - PERSPECTIVE VIEW
SCALA 1:15



0000562.00
BEAN CEILING FIXING
IRON and RUBBER
SCALA 1:3



0000561.00
STANDARD CEILING FIXING
IRON and RUBBER
SCALA 1:3



0000567.00
BED STRUCTURAL BOX - TRANSV. SECTION
IRON
SCALA 1:5

REV.	DATA / DATE	DESCRIZIONE DELLE MODIFICHE / DESCRIPTION OF ALTERATIONS	Controllo Checked	Modificato Revised
Riferimento Reference U. TEC. BLUBUD				
Descrizione Description PULLMAN BED - TYPE "N"				
Materiale Material		BLUBUD srl		
Spessore Thickness		VIA Dante 27 10121 TORINO, ITALIA Tel. +39011081953537 Fax. +39011081953537		
Note		Peso netto Kg Net Weight Kg		
Note		Seiella legittimo 10121 TORINO, ITALIA www.blubud.it		
Tolleranza generale General Tolerance		Assem		
Disegno da Drawn by		Disegnato da Drawn by		
Controllato da Checked by		Controllato da Checked by		
Classe prodotto Typology		Codice PB_B15_Typen		
Scala Scale		Data 24-01-10		



6

5

4

3

2

1