

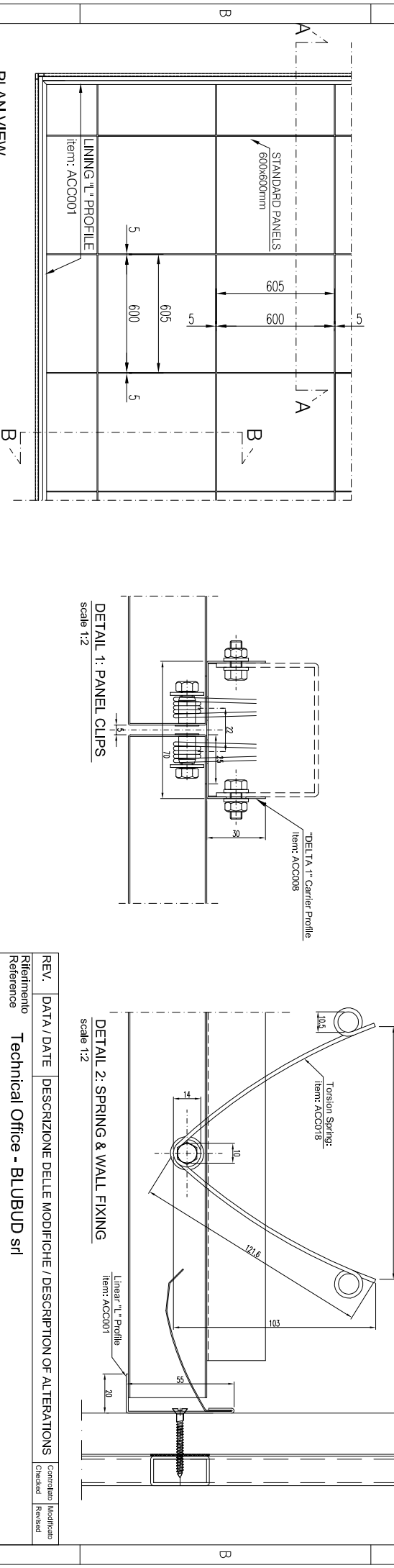
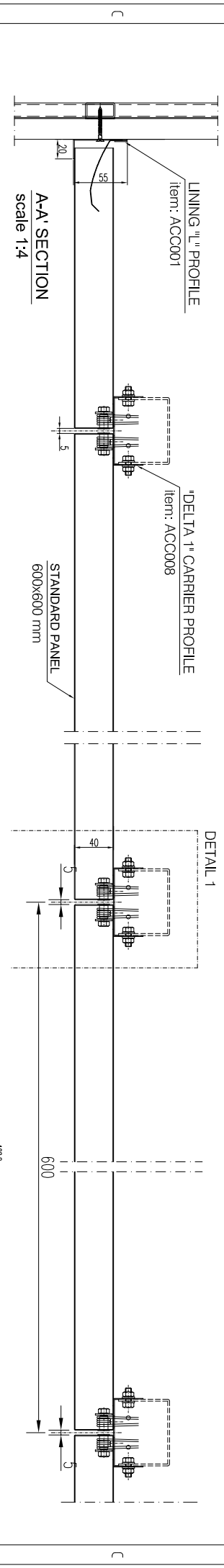
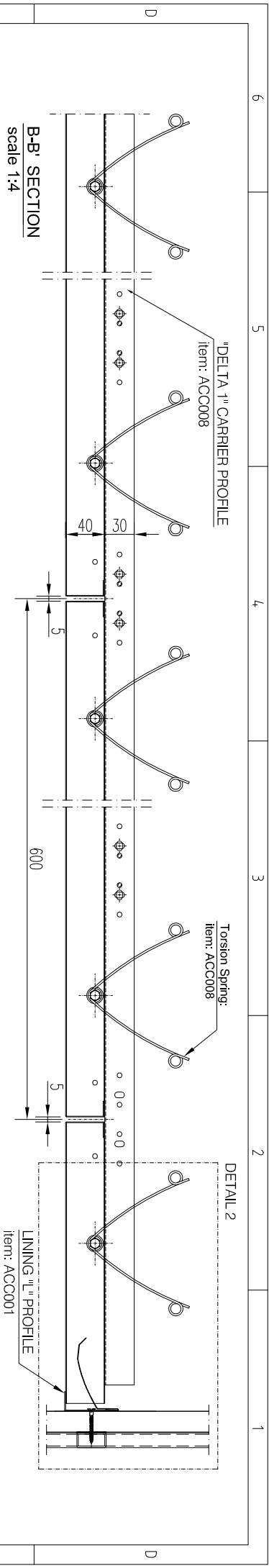
# CEILING PANEL SYSTEM



Product data sheet

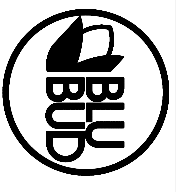
General Information	
description	suspended ceiling panel Delta system
type	DELTA
manufacturer	Prometal S.p.A.
Application	
fire properties	Surface materials and floor coverings with low flame-spread characteristics
finishing certificates, approvals	BLUCOLOR® - RINA MED Module B Nr. MED556108CS/001 BLUCOLOR2® - RINA MED Module B Nr. MED269910CS BLUPAINT® - RINA MED Module B Nr. MED178909CS BLUPAINT2® - RINA MED Module B Nr. MED140011CS
Size	
width	100 mm, 200 mm, 300 mm, 600 mm
length	100 mm, 200 mm, 300 mm, 600 mm
thickness of panel	28 mm
Technical features	
material	steel, stainless steel, aluminium
thickness of material	0,5 mm, 0,6 mm, 0,7 mm, 0,8 mm
finishing	rough, polished mirror, painted, sublimated
edges	square, trimmed
perforation	D222(22%), D2530(28%)
Accessories	
carrier profiles	standard ( DELTA 1 system) or slotted carrier (DELTA 2)
extra	cutouts and adapters for accessories (d.s. n. 093), primary structure (d.s. n. 095), viledon (d.s. n. 096), torsion spring (d.s. n. 091)
Mechanical and physical properties	
system weight [for 0,5 mm steel material]	abt. 5,91 kg/m <sup>2</sup>

ceiling\_type\_DELTA\_rev00



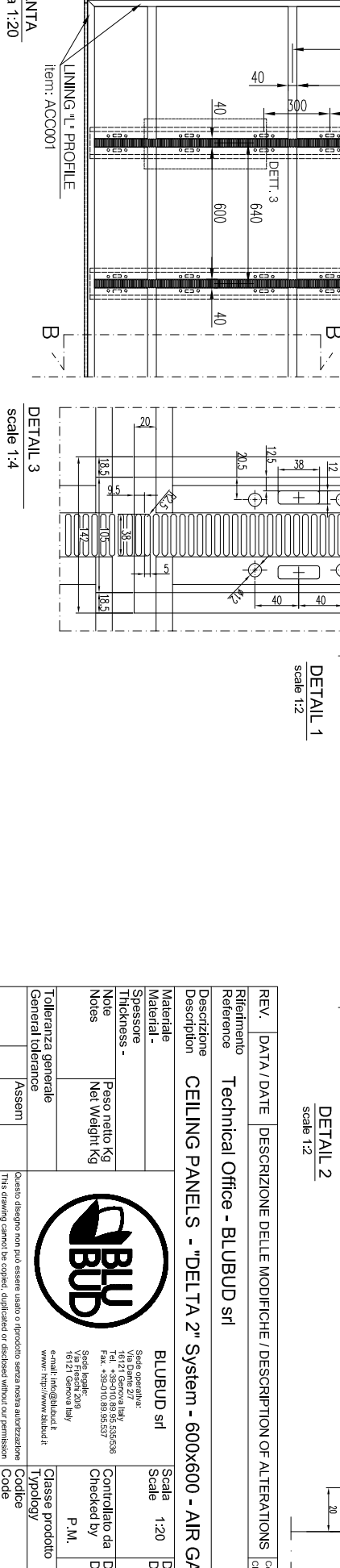
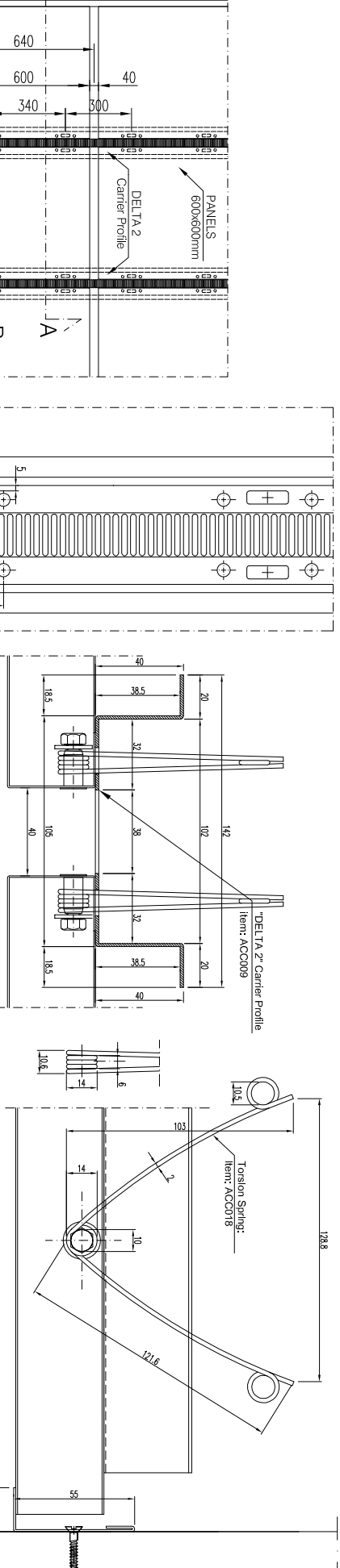
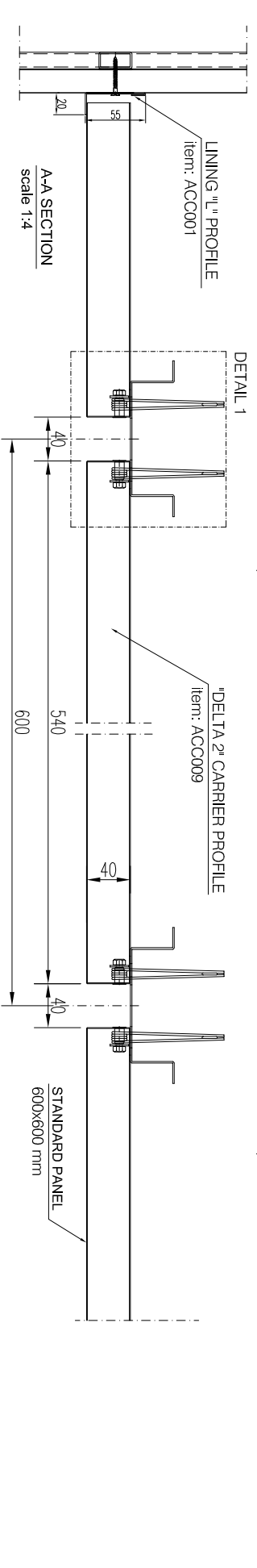
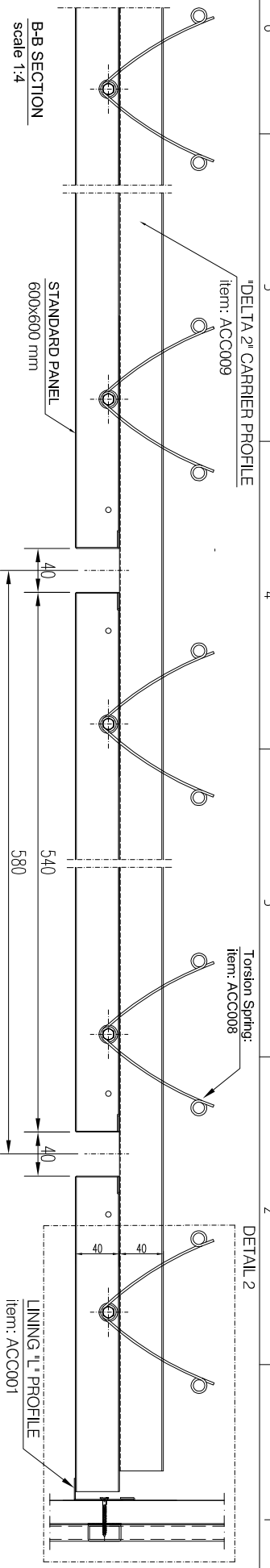
REV.	DATA / DATE	DESCRIZIONE DELLE MODIFICHE / DESCRIPTION OF ALTERATIONS	Controllato / Checked	Modificato / Revised
Riferimento	Technical Office - BLUBUD srl			
Descrizione	CEILING PANELS - "DELTA 1" System			

Materiale	BLUBUD srl	Scala	1:20	Data	22-06-10
Materiali - Spessore		Controllato da		Disegnato da	
Spessore - Note		Checked by	P.M.	Drawn by	M.D.S.
Note	Peso netto Kg				
Notes	Net Weight Kg				

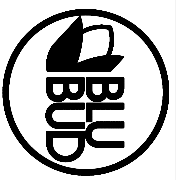


Sede operativa:  
 Via Dora 2/7  
 10121 Torino (TO) - Italy  
 Tel. +39-011-89.98.55/58  
 Fax. +39-011-89.98.53/57  
 Sede legale:  
 Via Fieschi 2/19  
 10121 Genova Italy  
 e-mail: info@blubud.it  
 www: http://www.blubud.it

Tolleranza generale	Assem	Questo disegno non può essere usato o riprodotto senza nostra autorizzazione This drawing cannot be copied, duplicated or disclosed without our permission	Codice	DELTA 1
General tolerance	Assem		Classe prodotto	Tipology



REV.	DATA / DATE	DESCRIZIONE DELLE MODIFICHE / DESCRIPTION OF ALTERATIONS	Controllato Checked	Modificato Reviewed
Riferimento Reference		Technical Office - BLUBUD srl		
Descrizione Description		CEILING PANELS - "DELTA 2" System - 600x600 - AIR GAP 40mm		
Materiale Material		BLUBUD srl	Scala Scale	1:20
Spessore Thickness			Data	22-06-10
Note		Peso netto Kg Net Weight Kg	Controllato da Checked by	P.M.
Note			Disegnato da Drawn by	M.D.S.
Tolleranza generale General tolerance		Assem	Classe prodotto Typology	DELTA 2



Sede operativa:  
 Via Dante 2/7  
 16121 Genova Italy  
 Tel. +39 010 89 98.537  
 Fax. +39 010 89 98.537  
 e-mail: info@blubud.it  
 www: http://www.blubud.it

Questo disegno non può essere usato o riprodotto senza nostra autorizzazione  
 This drawing cannot be copied, duplicated or disclosed without our permission

6 5 4 3 2 1

A B C D

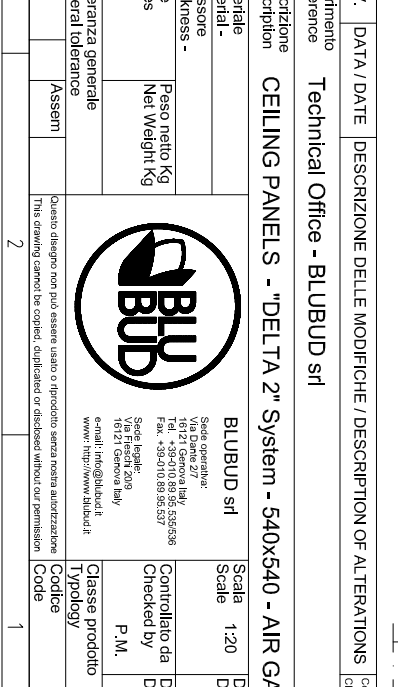
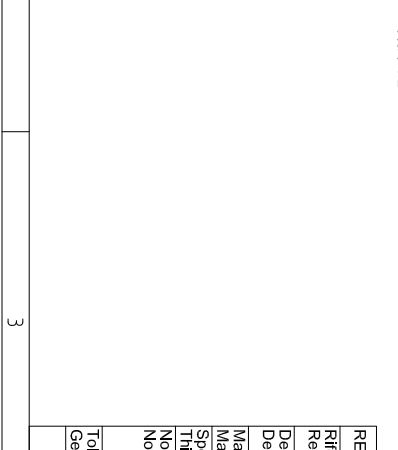
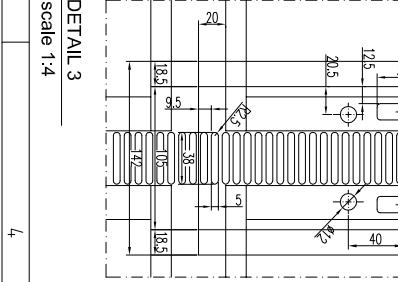
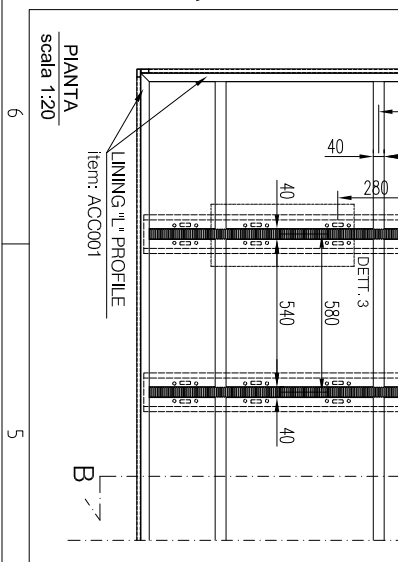
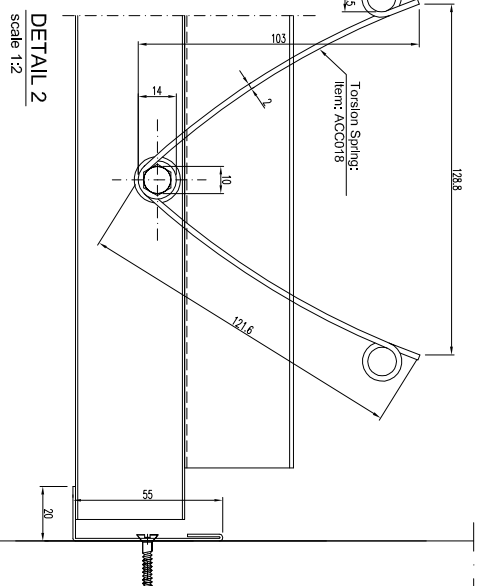
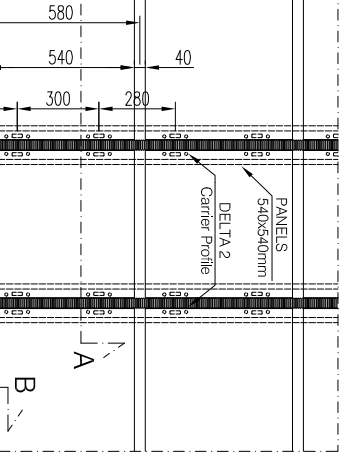
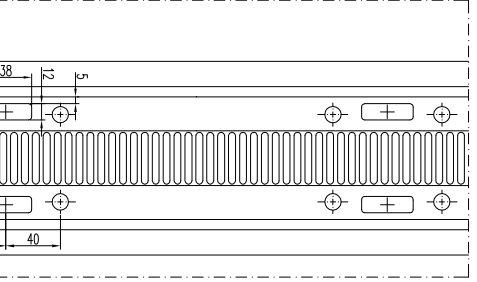
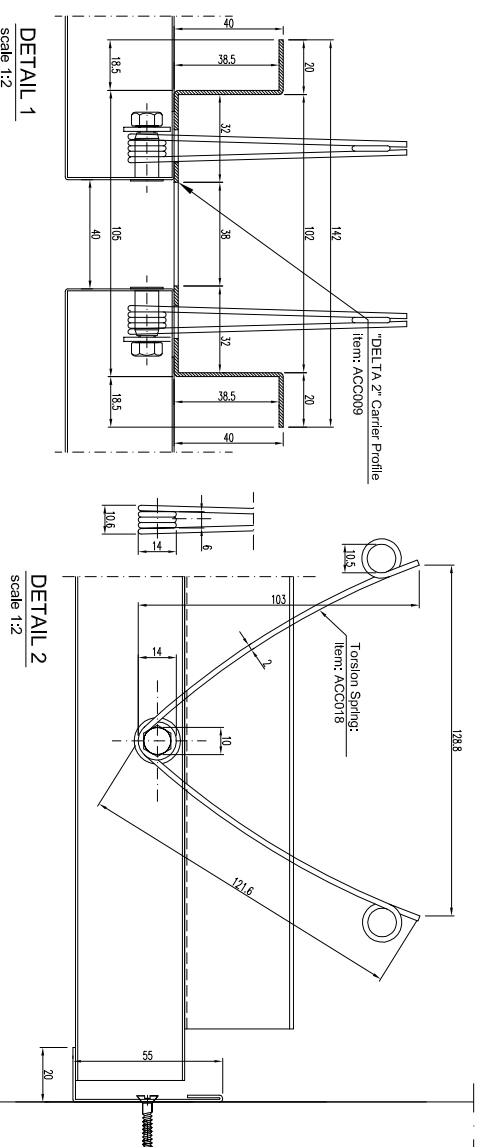
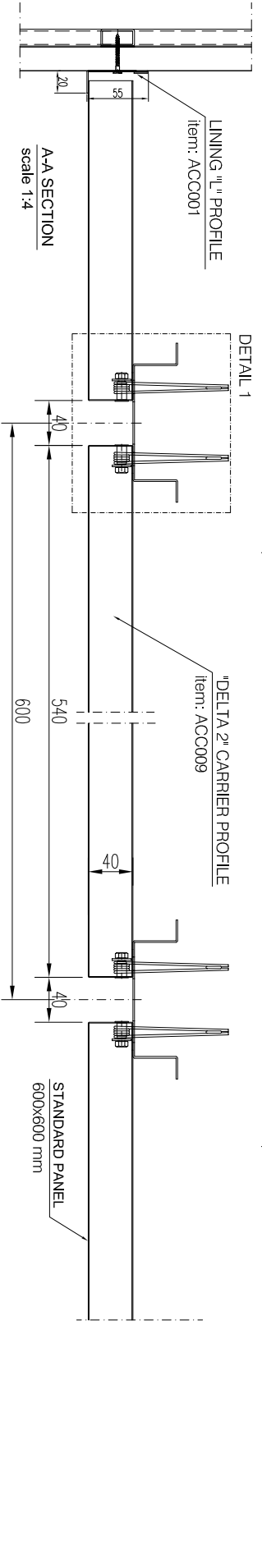
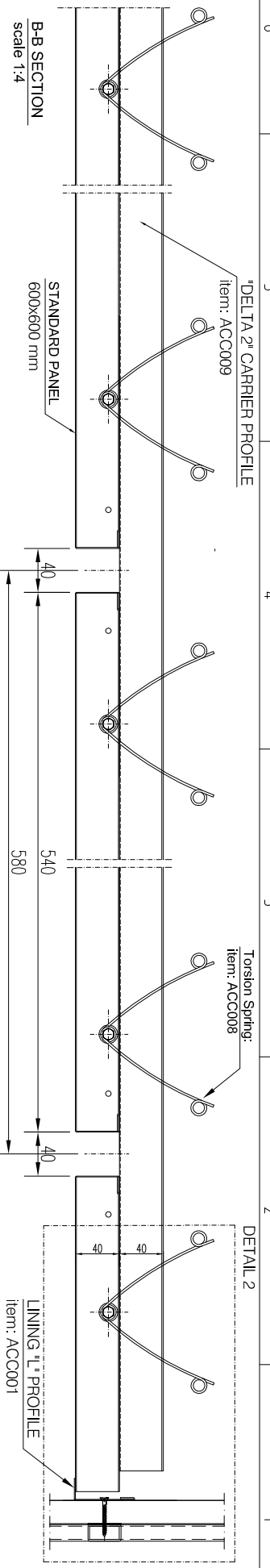
PIANTA  
scala 1:20


DETAIL 3  
scala 1:4

DETAIL 1  
scala 1:2

DETAIL 2  
scala 1:2

DETAIL 1  
scala 1:4



REV.	DATA / DATE	DESCRIZIONE DELLE MODIFICHE / DESCRIPTION OF ALTERATIONS	Controllato / Checked	Modificato / Revised
Riferimento	Technical Office - BLUBUD srl			
Descrizione	CEILING PANELS - "DELTA 2" System - 540x540 - AIR GAP 40mm			
Materiale	BLUBUD srl	Scale	1:20	Data
Spessore		Scale		22-06-10
Spessore		Controllato da	P.M.	Disegnato da
Spessore		Checked by		Drawn by
Spessore		Net Weight Kg		M.D.S.
Spessore		General tolerance		
Spessore		Assem		
Spessore		Questo disegno non può essere usato o riprodotto senza nostra autorizzazione This drawing cannot be copied, duplicated or disclosed without our permission		
Spessore				
Spessore		Sede operativa: Via Dante 2/7 10135 - Torino (TO) - Italia Tel. +39 011 89 96.55/98 Fax. +39 011 89 96.53/57 Sede legale: Via Fieschi 2/9 10121 - Genova (GE) - Italia e-mail: info@blubud.it www: http://www.blubud.it		
Spessore		Classe prodotto	DELTA 2	